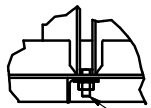
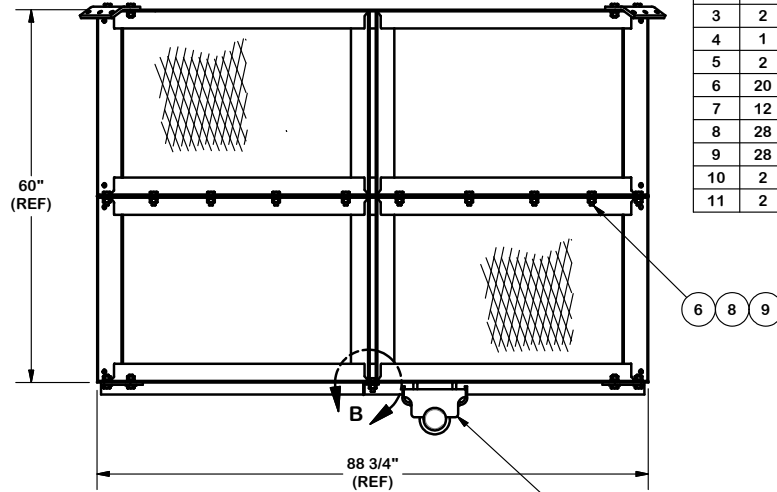


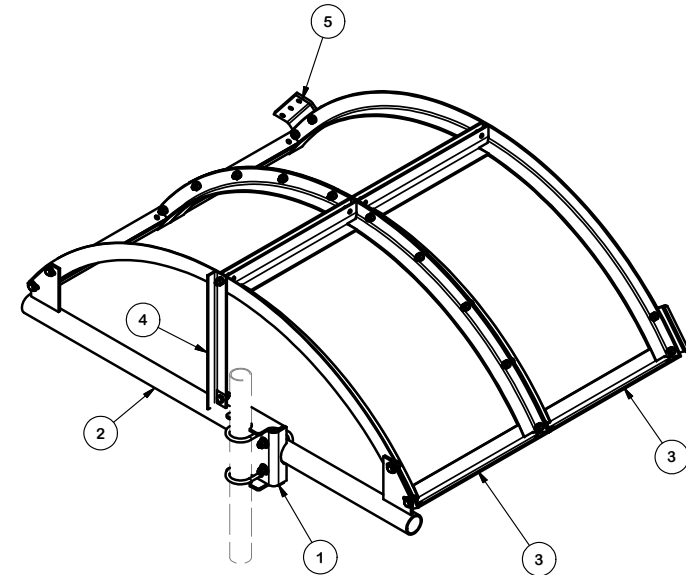
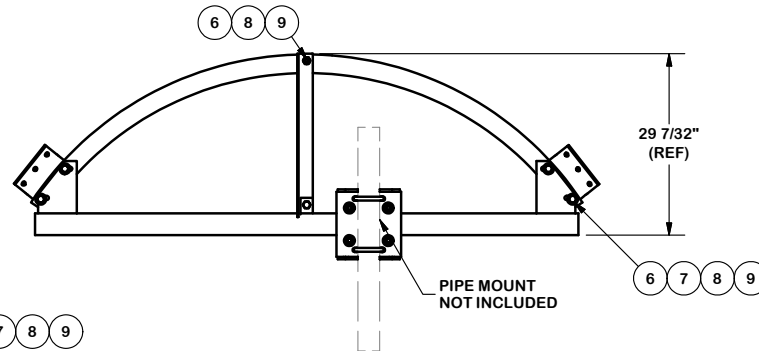
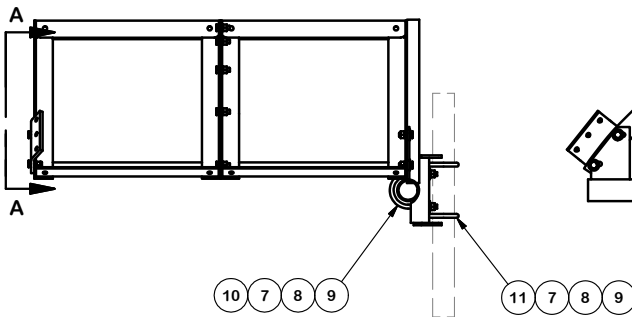
VIEW A-A



DETAIL B



LOCATE ON PIPE AS NEEDED TO
POSITION ICE SHIELD ABOVE ANT



PARTS LIST

ITEM	QTY	PART NO.	PART DESCRIPTION	LENGTH	UNIT WT.	NET WT.
1	1	X-58983	FORMED PLATE WELDMENT		23.46	23.46
2	1	X-110382	6FT CURVED ICE SHIELD HORIZ WELDMENT		67.43	67.43
3	2	X-51551	6 FT ICE SHIELD WELDMENT		306.03	612.05
4	1	X-110383	VERTICAL ANGLE BRACKET	26 5/16 in	6.38	6.38
5	2	X-50170	BENT PLATE BRACKET	7.20	14.40	
6	20	G58134	5/8" x 1-3/4" HDG BOLT	1 3/4 in	0.27	5.38
7	12	G58FW	5/8" HDG USS FLATWASHER		0.07	0.84
8	28	G58LW	5/8" HDG LOCKWASHER		0.03	0.73
9	28	G58NUT	5/8" HDG HEAVY 2H HEX NUT		0.13	3.63
10	2	X-UB5458	5/8" X 4-5/8" X 7" X 3" U-BOLT (HDG.)		0.81	1.62
11	2	X-UB5358	5/8" X 3-5/8" X 6" X 3" U-BOLT (HDG.)		1.31	2.62
					TOTAL WT. #	740.00

TOLERANCE NOTES

TOLERANCES ON DIMENSIONS, UNLESS OTHERWISE NOTED ARE:
 SAWED, SHEARED AND GAS CUT EDGES ($\pm 0.030"$)
 DRILLED AND GAS CUT HOLES ($\pm 0.030"$) - NO CONING OF HOLES
 LASER CUT EDGES AND HOLES ($\pm 0.010"$) - NO CONING OF HOLES
 BENDS ARE $\pm 1/2$ DEGREE
 ALL OTHER MACHINING ($\pm 0.030"$)
 ALL OTHER ASSEMBLY ($\pm 0.060"$)

PROPRIETARY NOTE:
 THE DATA AND TECHNIQUES CONTAINED IN THIS DRAWING ARE PROPRIETARY INFORMATION OF VALMONT INDUSTRIES AND CONSIDERED A TRADE SECRET. ANY USE OR DISCLOSURE WITHOUT THE CONSENT OF VALMONT INDUSTRIES IS STRICTLY PROHIBITED.

DESCRIPTION

6 FT ICE SHIELD
 INSTALLATION DETAIL

CPD NO.	DRAWN BY	ENG. APPROVAL
81	KC8 1/15/2013	
SUB	DRAWING USAGE	CHECKED BY
02	CUSTOMER	CEK 2/18/2013



Locations:
 New York, NY
 Atlanta, GA
 Los Angeles, CA
 Plymouth, IN
 Salem, OR
 Dallas, TX

Engineering
 Support Team:
 1-888-753-7446

PART NO.	CIS06	PAGE
DWG. NO.	CIS06	1 OF 1